

# Bartlesville

## LIVING

January 2020



## TEAM THILL

*Rooted in our Community*


*Dedicated to You*

See Pages 8 & 9

# McGraw

## REALTORS®

© 2020 McGraw, REALTORS®. All Rights Reserved. McGraw, REALTORS has relied upon information provided by sellers, third parties, tax authorities and official government records and may contain inaccuracies of which McGraw, REALTORS® is not aware.

 (918) 876-4470

 5120 E Frank Phillips Blvd



## SAFE, HIGH-QUALITY CARE SINCE 2001

At Lavers Aesthetics, we foster meaningful relationships with each of our clients, meaning that we truly care about you and will work hard to help you achieve your aesthetic goals. We have years of Dermatology experience and have worked with some of the nation's top experts, so we can provide a level of aesthetic excellence that is unique in Bartlesville.

## LOVE YOUR AESTHETIC



**NEUROMODULATORS**  
for smooth, wrinkle-free skin

+



**DERMAL FILLERS**  
for softened lines and full lips

+



**KYBELLA**  
for a slender neck and sculpted jaw



I would definitely recommend Chris for any Cosmetic need. He is professional, knowledgeable and his work is perfection. As far as needles go, he makes it pain free in my opinion. I completely trust him and love my visits. I always leave feeling confident and beautiful.

**GAYLA ROBLEDO**

# Bartlesville

LIVING

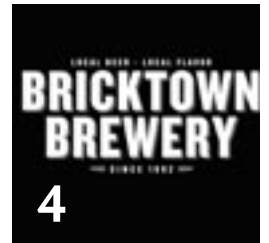
## Table of Contents

3 Making Lemons Out of Lemonade



3

4 New Businesses On Tap



4

5 Hee Haw Legend to Visit Platinum Cigar Company



5



6

6 Wee-Cycle Seeking Consignors

7 It's Paw-ty Time at Lubella's



7



9

9 Team Thill Here to Help People

**Bartlesville**  
LIVING

Volume II  
Issue I

Bartlesville Living is Published by **ENGEL**  
PUBLISHING

Publisher  
Brian Engel  
brian@bartlesvilleliving.com

Art Direction  
Copper Cup Images  
design@coppercupimages.com

Project Manager  
Andrea Whitchurch  
awhitchurch84@gmail.com

Sales Associate  
Peg S. Wilson  
peg@bartlesvilleliving.com

Contributing Writers  
Mayor Dale Copeland,  
Deanna Evans, Tim Hudson

Contributing Photographers  
City of Bartlesville, Team Thill  
Lubella's Market

About the cover:  
Husband and wife team  
of Howard & Shawna  
Thill help through real  
estate. Design by  
Copper Cup Images.





**New menu items & new coffee choices coming soon!**



## Daily Breakfast Specials

### Monday

Eggs, Sausage, Hash browns, Toast, and Coffee \$6.99

### Tuesday

Eggs, Sausage, Belgian Waffle, and Coffee \$ 6.99

### Wednesday

Eggs, Ham, Hash Brown, Toast, and Coffee \$7.29

### Thursday

Eggs, Sausage, 2 pancakes, and Coffee \$6.99

### Friday

Eggs, Sausage, Biscuit & Gravy, and Coffee \$6.29

**Carry out, catering, & reservations available**



## Daily Lunch Specials

### Monday

Buy one Hamburger get one FREE! \$7.99

Hamburger Fries & Coke \$6.99

### Tuesday

Chicken Fried Steak \$7.99

- Includes Green Beans or Corn, choice of FF or mash potatoes and gravy, Texas toast

### Wednesday

Hot hamburger \$6.00

Hamburger Fries & Coke \$6.99

### Thursday

Chicken Noodles \$7.99

- Includes Mash potatoes, green beans or corn, Hot Roll

### Friday

All you can eat Catfish & French fries \$10.99

Catfish 1-piece Meal \$8.29

- Includes 2 sides: red beans rice, coleslaw, French fries, or tator tots

Fried or grilled Shrimp & Grits \$8.99



*Specials available for a limited time only*

**Monday-Friday 6am - 1:30pm | Saturday 6:30 - 11am | Sunday 6:30am - 1 pm**

**328 S Dewey Avenue, Bartlesville, OK 74003**

**918-337-0881**

**www.weezescafe.com**

# Making Lemons Out of Lemonade

## City Working to Maximize Available Resources

by Mayor Dale Copeland

Just over 10 years ago our city, and nation, experienced one of the most severe economic downturns in our history. The city of Bartlesville responded with necessary reductions in spending, which included staffing reductions and delays in projects. No one likes those necessary decisions, certainly no one in management or on the city council. Those circumstances resulted in serious reflection and action on how to best move our community forward — how to use the lemons to make lemonade, so to speak.

Many positive results flowed from those challenges and considerations, including:

- Establishment of the Strategic Reserve Fund (like a rainy day fund) to help cushion us against future downturns.
- A continuing shift to capital funding that anticipates recurring major expenses (vehicles, equipment, etc.) to plan for replacement on a cycle to reduce spikes in spending. This has worked well, as demonstrated with the present practice to purchase approximately 6-8 police vehicles each year.
- A strong focus to address quality of life projects, with several parks & recreation updates, and more on the way.
- A continued effort on street maintenance and improvement of our 500+ lane miles of streets in the city.
- A major focus to attract and improve our retail offerings across a broad spectrum.
- Continuing efforts with primary obs recruiting and development to grow our jobs base.
- Maintaining joint efforts with our federal legislators to secure affordable fresh water supplies for the next 50 years.

Several of those actions have already borne fruit and others are progressing positively. Several new retailers elected to locate in our community, broadening the offerings available to local customers, with contracts from other retailers now happening regularly. Although some corporate operations elected to alter their plans here with downsizing, others are growing and hiring and appear poised for continued local growth. STC-SMC, DSR, and ABB are just a few of those growing companies, in addition to our long-standing and strong relationship with both Phillips 66 and ConocoPhillips. Our local medical center continues as an excellent regional care provider, with regular upgrades to their services.

The future seems bright for our city due to a solid fiscal operation (garnering excellent financial ratings) with a conservative management style that works to anticipate the needs and wishes of the citizens. A major software/systems upgrade currently underway will make services even more readily available, while maximizing staff efficiencies. Efforts by all departments to deliver top-flight customer service is a constant. Basically, the last decade has seen our city learn and implement ways to do more with less, and do it better. Although never perfect in those efforts, the focus is constant and improving.

Personally, I believe our future will be much the same as the past. We can never know nor fully anticipate future problems, but



MAYOR DALE COPELAND

past actions will make any such situation more manageable, and that is what good government should do. In our future, we can anticipate a major sewer plant update, water reuse, continuing street work, typical updates for fire, police, sanitation equipment, and the myriad of other municipal services we expect.

Looking ahead, I would like to see more quality of life projects like the Johnstone Park pavilion, the Kiddie Park improvements, the Tower Center, and Pathfinder trail system. Those should include ongoing updates to our great municipal Adams Golf Course, Pathfinder extensions to serve more areas of the community, enhanced walking-biking paths throughout the city, and a new activity center near downtown that could host a broad spectrum of indoor events like equestrian, rodeo, sporting (basketball, soccer, etc.), home & garden shows, and other events that call for modern, more open and configurable spaces that are not presently available here.

We are surely blessed to call Bartlesville home, and I am confident every effort will continue that reality.

*Thanks and best wishes for a terrific new year,  
Dale Copeland, Mayor*

# Two New Businesses On Tap

## Bricktown Brewery, Jimmy's Egg Headed to Old KMart Property

Courtesy of Bartlesville City Beat

The City Council on January 6 voted unanimously to approve the expenditure of \$150,000 in 1/4-cent economic development sale tax funds to help facilitate the location of Bricktown Brewery and Jimmy's Egg restaurants on the former KMart property located at Washington Boulevard and Eastland Parkway.

Bartlesville Development Authority President David Wood told the council the BDA has been looking to recruit businesses for the property since KMart closed in October 2017. Five brands have committed to the property in recent months.

Wood said Jimmy's Egg sales is approximately \$1.2 million per year, while Bricktown Brewery sales total approximately \$3.2 million, for a combined total between the two of \$4.5 million in projected sales. The businesses are expected to generate \$302,940 in net new sales tax revenues over a 10-year period.

Wood said the BDA had shifted its focus several years ago to bringing more retail to Bartlesville, after studies indicated a large number of people working in Bartlesville had chosen to live someplace else. He said while efforts are ongoing to locate "an anchor" for Washington Park Mall, resolve the KMart blight, and securing a tenant for the vacant Sitel Center building, located on Frank Phillips Boulevard, BDA has returned its focus to recruiting primary industry to the area.

City council members also expressed excitement about the development.

"I am glad to see that the new development at the KMart location will bring five new retail stores and two new restaurants to Bartlesville. It marks a continuing improvement to that stretch of Washington Boulevard and increases choices for our citizens and visitors to Bartlesville," Ward 5 Bartlesville City Council member Alan Gentges said.



# Bartlesville

## LIVING

Find the pot of gold at the end of the rainbow! Give your business a competitive edge with Bartlesville and Dewey's only direct-mailed publication! Contact Peg Wilson at 918-914-2965 or [peg@bartlesvilleliving.com](mailto:peg@bartlesvilleliving.com).



**PLATINUM**  
CIGAR COMPANY

An Evening With  
**RODNEY LAY**



**FRIDAY, FEBRUARY 21 • 7:30 PM**

Singer/Songwriter • Actor/Musician  
Bandleader for Roy Clark for over 20 years

Come spend the evening with Rodney Lay and hear his amazing stories of the famous people he's met and the places he's traveled.

Mon - Thu 3 - 11 pm | Fri & Sat 11 am - Midnight  
Closed Sunday

314 S. Johnstone Avenue, Bartlesville, OK 74003  
918-214-8252

# Hee Haw Legend to Visit Platinum Cigar Company

by **Tim Hudson**

Local country music fans would be surprised to know that a bit of country royalty lives just up the road in Dewey.

Rodney Lay, “Hee Haw” star, bandleader, and bass player for Roy Clark, calls Green Country home. Rodney’s story starts a little further up the road in Coffeyville, Kansas, where he grew up in a musical family that encouraged him to start performing at an early age.

By the late 1950s, he formed a rock and roll band, Rodney and the Blazers, who toured with the likes of Jerry Lee Lewis and Wanda Jackson. By 1962, he met and played with Roy Clark in Las Vegas, beginning a musical relationship that would have an enormous effect — not only on his musical career, but his life in general.

Throughout the 60s, Rodney enjoyed a variety of successes, including major songwriting successes. His song “He’s Got a Way with Women” was a Top-20 hit for Hank Thompson in 1967, and it was again several years later when Bob Luman recorded it. In 1969, “Something’s Wrong in California” was a Top-20 hit for Waylon Jennings, while his song “Gotta Get to Oklahoma” became another hit.

Hollywood also had a visit from Rodney when he appeared in the 1973 movie *Pat Garrett & Billy the Kid* and his music appeared in the 1989 Tom Cruise movie, *Born On The Fourth Of July*. His real signature spot however came in 1980, however, when Roy Clark asked him to be his band leader on “Hee Haw,” a position he has held until the show’s final year in 1992.

Come spend an evening with Rodney on February 21 at 7:30 p.m. at the Platinum Cigar Company, located at 314 S. Johnstone Ave, to hear more about Rodney’s true “Hee Haw” stories.



# Wee-Cycle Seeks Consignors For February Sale

by Deanna Evans

Wee-Cycle Bartlesville, a multi-day children's consignment sale, is currently seeking consignors for their upcoming February event. The sale will be held February 21-22 at the Washington County Fairgrounds.

"We offer our consignors the opportunity to make 70 percent of the profit from the sale of each item they consign," said Sara Freeman, who co-owns and operates the business with her husband, Bryan. "The goal of Wee-Cycle is to offer quality infant, children, and maternity items at a fraction of the price you would pay in a store."

Wee-Cycle holds two sales each year, one in February and another in August.

Those interested in consigning can sign up through Wee-Cycle Bartlesville's website, at [www.wee-cyclebartlesville.com](http://www.wee-cyclebartlesville.com). Items need to be clean, sanitized and smell fresh. Clothing should be hung on hangers. Tags can be printed from the website. Items that are tagged and ready to sell can be brought to the Washington County Fairgrounds during the Consignor Drop Off.

"Our February sale will offer spring and summer clothing," said Freeman. "This sale will be full of spring/summer clothes and shoes, along with toys, books, games, electronics, baby gear, and furniture.

"Any items that do not sell can either be donated or picked up at the designated time," she added.

Payments to the consignors will be sent electronically within two weeks of the sale closing. Consignor profit will be 70 percent from all items during the sale, minus a \$10 consignor fee.

Find Wee-Cycle Bartlesville on Facebook for more information and other sale-related activities.

"We communicate lots of details and have contests on our page," said Freeman.

For more information, visit Wee-Cycle Bartlesville online.



## Donation Items Needed

- Paper Towels
- Clorox anti-bacterial wipes
- AA batteries
- Trash bags
- Laundry soap
- Monetary donations

Donations are being accepted for the Animal Rescue Foundation of Bartlesville (ARF).



Bring in a donation through February 1 and receive a reward card. All cards have \$1, \$5, \$10, or \$50 value. Bring your card back February 3-14 to find out if you won big and redeem!

116 E 2nd Street, Bartlesville, OK 74003 • 918-766-9681

## Tom's Auto Repair



Is your car ready for winter?  
**Let us keep you safe!**

112 NE Washington Blvd

**918-333-7422**

Hours: Mon - Fri 8am-5pm



# It's Paw-ty Time at Lubella's

## Lubella's Market Celebrating Dog Daisy's Birthday

by Deanna Evans

Lubella's Market is celebrating sweet dog Daisy's birthday in style this year.

"The boss lady is having a birthday!" said Kayla Wilson, owner of Lubella's Market, located in downtown Bartlesville, and Daisy's best friend. "Nine years young calls for a big celebration."

Lubella's will be accepting donations for Animal Rescue Foundation of Bartlesville all month long.

"During the monthlong Paw-ty, Daisy would like you to join her in celebrating, so you can feed her treats ... err she means she would like to share treats with her furry animal friends at ARF," said Wilson. "Daisy knows she has the best life any dog could possibly ask for, and wishes every single dog the same, so we will be accepting donations for Animal Rescue Foundation of Bartlesville all month long."

Suggested donations include paper towels, Clorox anti-bacterial wipes, AA batteries, trash bags, laundry soap, as well as money. These items help support the rescue dogs and cats waiting on their forever homes. Everyone who brings in a donation now through February 1 will be given a Lubella's Reward Card that has a reward of \$1, \$5, \$10 or \$50 on it. The value of the card will be revealed when it is brought back to be redeemed between February 3-14.

"That's when you learn how big a winner you are," said Wilson. "Giving to ARF and helping those animals who don't have families yet is the best feeling ever, aside from seeing them get a forever home."

Lubella's Market, located at 116 E. Second Street in downtown Bartlesville, is a boutique that features more than 20 local vendors, as well as Wilson's hand-selected pieces. From handmade jewelry to sev-

eral styles of home décor, clothing, candles and wax, men's gifts, accessories, and other locally made products, Lubella's offers something for everyone.

Local vendors include Murph & Molly Plaster Paint, Deena Testerman Designs, Curbside Closet, Oklahoma Blue, BeYou Designs, Oklahoma Blue Boutique, Diane Leroux Jewelry, The French Nest, Retro Purpose, Roark Acres Honey Farms, Joyce Aldredge Jewelry, Persnaps Jewelry, The Native Screen Prints, My 2 Scents, TNT Designs, A&M Craft Co, and The Pink Pineapple Boutique.

"I enjoy having other vendors in here," said Wilson. "All new boutique-type items that you would go to a store and buy — those unique and different specialty items — can now be found all in one location."

Lubella's Market is part of the Bartlesville Boutique District in downtown Bartlesville's shopping district.

"We've been loving our new and bigger location and having all the vendors in one location for about two years now," said Wilson. "2020 is going to bring some exciting changes. We are always evolving, updating, and looking for the best products and styles for our customers."

"This is our eighth year in business and we wouldn't be here without our wonderful customers," she added. "Daisy and I are so thankful for each and every one of you!"

Hours are 10 a.m. to 5:30 p.m. Monday through Friday, and 10 a.m. to 4 p.m. Saturday. For more information about Lubella's and Daisy's birthday Paw-ty, visit [www.shoplubellas.com](http://www.shoplubellas.com) or find Lubella's Market on Facebook.

≡♡≡  
*Paw-ty*



# TEAM THILL

*Buying or Selling  
a Home?  
Call Us for Results!*

McGraw  
REALTORS®



© 2020 McGraw, REALTORS®. All Rights Reserved. McGraw, REALTORS has relied upon information provided by sellers, third parties, tax authorities and official government records and may contain inaccuracies of which McGraw, REALTORS® is not aware.

**Howard &  
Shawna Thill**

**918-914-0558  
918-906-4135**



# Team Thill Here to Help People

## Husband & Wife Team Assisting Through Real Estate

by Deanna Evans

A local couple is taking their passion for helping others and their community and is using it to drive their business goals. Local real estate agents Howard and Shawna Thill established Team Thill in Bartlesville and are now a part of the McGraw Realtors®. Tulsa headquartered McGraw Realtors® was established in 1938 and has offices throughout Green Country but only recently established an office in Bartlesville.

“We really enjoy helping people,” said Realtor® Howard Thill. “When I retired from the oil and gas business in October of 2018 after a career of over 35 years, Shawna and I wanted to do something together. This was something we could do as a team and continue to be in the community and helping people.”

Both are natives of Northeast Oklahoma and proud to call Bartlesville home. Howard was born and raised in Bartlesville, graduating from College High School in 1977. Shawna was raised in Broken Arrow. Both graduated from Oklahoma State University.

“We love this community and the people in it so much we decided to stay here and be a part of that community,” said Realtor® Shawna Thill.

“We joined this group of realtors because of the close-knit nature of the people at the firm,” said Shawna. “It’s a family atmosphere and it fits with our personalities.”

Howard agreed.

“There is a lot of camaraderie, and the technical training and support it provides is something that is important for both us and our clients. We have a significant support group behind us with McGraw Realtors®.”

The couple has already enjoyed success since starting this new venture, and find it fulfilling to help others buy and sell houses.



“We have been in it for less than a year and have sold a number of houses, both as the listing agent and as the buyer’s agent,” said Howard. “I think when you help a first-time home-buyer by leading them through the process and going through all the steps is most fulfilling. It’s much more than just looking at houses. It includes becoming pre-qualified, the financing, and inspections, to mention a few. We had a couple of those from this year where we helped some very young couples get into their first home. That’s very gratifying.”

“It’s a great satisfaction helping people find their dream home, no matter what size or price range. For most people, their home is the largest investment they’ll ever make, and we take that very seriously,” Howard added.

Shawna agreed.

“When someone is moving from a rental to owning their first home, that’s huge,” she said.

Team Thill also enjoys helping those who are transferring, relocating, or retiring sell their homes.

“If you have somebody who is transferring, it’s nice to be able to ease their mind. They can rest assured they have someone taking care of their house,” said Howard. “People know they can leave the keys with us and we are going to take care of it.”

Team Thill’s slogan says it all: “Rooted in our community. Dedicated to you.”

Both active members of the community, Howard and Shawna are committed to helping others. In addition to their real estate business, they stay busy with other activities, as well. Shawna owns and operates Bliss Yoga Studio in downtown Bartlesville and manages the couple’s rental properties, while Howard serves on the boards of various non-profits in town. They are members of St. James Catholic Church in Bartlesville.

The couple have seven children, all of whom grew up here and attended Bartlesville High School. Their youngest is currently a senior at BHS.

Team Thill can be reached by calling Howard at 918-914-0558 or Shawna at 918-906-4135. Check out their Facebook page at Team Thill Real Estate.



# CHINOWTH & COHEN

3061 S.E. Washington Blvd. Bartlesville, OK 74006 REALTORS.

Voted Best  
Real Estate Company!  
Tulsa World  
Best in the World  
2015, 2016, 2017,  
2018, & 2019!



## BARTLESVILLE'S LARGEST, LOCALLY-OWNED REAL ESTATE COMPANY!



Tom Blain  
918-886-2276



Kathlene Blevins  
918-440-1859



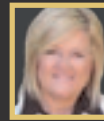
Dusty Brown  
918-766-4126



Freda Brown  
918-418-9506



Charlene Bejcek  
918-440-4763



Kay Clopp  
918-440-7077



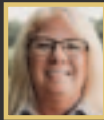
Cindy Folk  
918-559-9905



Andrew Gordon  
918-230-0864



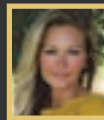
Keeli Hand-Droege  
918-697-8509



Melissa Henry  
918-440-1177



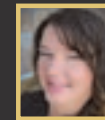
Chris Hester  
918-333-8700



Lindsey King  
918-500-9170



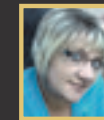
Amos Radlinger  
918-766-2361



Janette Roark  
918-907-1327



Brian Saltzman  
918-214-3053



Kim Tate-Connor  
918-335-7193



Max Lutke  
Managing Broker  
918-914-3913

### YOUR HELPING HAND IN REAL ESTATE!

- 19 Years Experience
- Relocation Specialist
- Member of Top Selling Hand Team



**KEELI HAND-DROEGE**  
918.697.8509

keeli@handhouses.com  
www.HandHouses.com



### FEATURED PROPERTIES!



5927 SE Adams Blvd  
Bartlesville  
3/1/2 • 8.02 Acres • \$269,000  
Janette Roark 918-907-1327



2232 Kristin Lane  
Bartlesville  
4/3/3 • \$159,000  
Amos Radlinger 918-766-2361



210 E Edens Avenue  
Copan  
3/2 • \$110,000  
Keeli Hand 918-697-8509

#### RESIDENTIAL

19301 N 4030 Rd	Bartlesville	3/2	\$339,000	Cindy Folk	918-559-9905
5927 SE Adams Blvd	Bartlesville	3/1/2	\$269,000	Janette Roark	918-907-1327
2004 Stanford Drive	Bartlesville		<b>PENDING</b>	Amos Radlinger	918-766-2361
2008 Ashford Drive	Bartlesville		<b>SOLD!</b>	Melissa Henry	918-440-1177
5829 Whitney Lane	Bartlesville	4/2.5/2	\$197,900	Kathlene Blevins	918-440.1859
2916 Greenwood Court	Bartlesville		<b>PENDING</b>	Tom Blain	918-886-2276
1820 Southview Ave	Bartlesville		<b>PENDING</b>	Keeli Hand-Droege	918-697-8509
1220 SE Cherokee Ave	Bartlesville		<b>SOLD!</b>	Amos Radlinger	918-766-2361
3017 Stonewall Drive	Bartlesville		<b>SOLD!</b>	Andrew Gordon	918-230-0864
821 Osage Ave	Bartlesville		<b>SOLD!</b>	Keeli Hand-Droege	918.697.8509
2232 Kristin Lane	Bartlesville	4/3/3	\$159,000	Amos Radlinger	918-766-2361
5725 Hazel Road	Bartlesville	3/2/2	\$158,000	Brian Saltzman	918-214-3053
220 SE Roselawn Ave	Bartlesville	4/1.5/2	\$154,995	Dusty Brown	918-766-4126
1406 May Lane	Bartlesville	3/2/2	<b>SOLD!</b>	Chris Hester	918-333-8700
3012 Loris Lane	Bartlesville		<b>SOLD!</b>	Janette Roark	918-907-1327
3428 Willowood Drive	Bartlesville		<b>SOLD!</b>	Kathlene Blevins	918-440-1859
4606 Cara Lee Lane	Bartlesville	3/2/2	\$127,900	Melissa Henry	918-440-1177
402951 W. 2300 Road	Bartlesville	3/2.1	\$120,000	Melissa Henry	918-440-1177
1741 East Drive	Bartlesville		<b>SOLD!</b>	Melissa Henry	918-440-1177
313 Morningside Ave	Bartlesville	3/2/2	\$84,900	Charlene Bejcek	918.440.4763
1009 Macklyn Lane	Bartlesville	4/2/2	\$89,000	Amos Radlinger	918-766-2361
145 Staats Place	Bartlesville		<b>SOLD!</b>	Brian Saltzman	918-214-3053
708 Yale Drive	Bartlesville		<b>SOLD!</b>	Amos Radlinger	918-766-2361
5249 Nowata Road #J102	Bartlesville		<b>PENDING</b>	Chris Hester	918-333-8700
5217 Nowata Road #C-203	Bartlesville	2/2	\$65,000	Chris Hester	918-333-8700
121 N. Park Ave	Bartlesville	2/1/2	\$25,000	Chris Hester	918-333-8700

#### SURROUNDING AREAS

115 S Sally Lane	Dewey	5/5/2	\$474,900	Caryn Nevins	918-350-4311
Rt 1, Box 89	Wann	3/2/2	\$299,900	Cindy Folk	918-559-9905
14851 N 3994 Way E	Dewey	3/2/6	\$279,900	Linda Loftis	918-855-4334
399481 W 1100 Road	Dewey		<b>SOLD!</b>	Tom Blain	918-886-2276
8800 N 4010 Road	Oklahoma Union		<b>SOLD!</b>	Keeli Hand-Droege	918-697-8509
398041 W 1100 Road	Dewey		<b>SOLD!</b>	Melissa Henry	918-440-1177
102 S Baker Street	Copan		<b>SOLD!</b>	Andrew Gordon	918-230-0864
210 Edens Ave	Copan	3/2	\$110,000	Keeli Hand-Droege	918-697-8509
207 Brahma avenue	Dewey	3/1/1	<b>PENDING</b>	Melissa Henry	918-440-1177
7748 Hickory Hill Road	Bowring	3/1.5	\$83,000	Andrew Gordon	918-230-0864
322 Ponca Ave	Dewey		<b>SOLD!</b>	Melissa Henry	918-440-1177
403 W Olympia Street	Dewey	3/1/1	\$69,000	Kathlene Blevins	918-440-1859
208 Walnut Street	Wann	2/1	\$60,000	Lindsey King	918-500-9170
31 County Road 3587	Bowring	2/1	\$37,000	Kathlene Blevins	918-440-1859

#### RESIDENTIAL LOTS & VACANT LAND

S.E. Price Rd	Bartlesville	50 Acres	\$1,575,000	Janette Roark	918-907-1327
3813 E. Frank Phillips Blvd.	Bartlesville	Comm. Lot	<b>PENDING</b>	Max Lutke	918-914-3813
6532 W 1781 Dr	Bartlesville	150.17 Acres	\$675,765	Tom Blain	918-886-2276
HWY 75 North	Dewey	Comm. 8+ Ac	\$499,900	Tom Blain	918-886-2276
HWY 75	Caney Valley	100 Acres	\$510,000	Tom Blain	918-886-2276
SE Barnett Ave	Bartlesville	Land	<b>PENDING</b>	Tom Blain	918-886-2276
Tuxedo Blvd	Bartlesville	8.32 Acres	<b>PENDING</b>	Max Lutke	918-914-3813
Southport Dr	Bartlesville	8 Acres	\$120,000	Janette Roark	918-907-1327
Barnett Ave	Bartlesville	1.61 Acres	\$79,900	Chris Hester	918-333-8700
Deerfield Addition II	18 Lots	\$40,000-\$69,000 ea.		Janette Roark	918-907-1327
103 S Osage Ave	Bartlesville	.29 Acres	\$63,900	Tom Blain	918-886-2276
Deerfield Addition III	10 Lots	\$60,000 ea.		Janette Roark	918-907-1327
Southport Dr	Bartlesville	5- Acres	\$59,500	Janette Roark	918-907-1327
400 Wyandotte Ave	Bartlesville	Res. Lot	\$30,000	Janette Roark	918-907-1327
402 Wyandotte Ave	Bartlesville	Res. Lot	\$30,000	Janette Roark	918-907-1327
423 Wyandotte Ave	Bartlesville	Res. Lot	\$30,000	Janette Roark	918-907-1327
Southport Dr	Bartlesville	Res. Lot	\$29,500	Janette Roark	918-907-1327
Southport Loop	Bartlesville	Res. Lot	\$21,000	Janette Roark	918-907-1327
717 S. Dewey Ave	Bartlesville	2 Lots	\$19,900	Kim Tate-Connor	918-335-7193
Southport Loop	Bartlesville	Res. Lot	\$17,500	Janette Roark	918-907-1327
2912 Loris Ln	Bartlesville	0.198 Acres	\$17,500	Janette Roark	918-907-1327
2909 Loris Ln	Bartlesville	0.18 Acres	\$17,500	Janette Roark	918-907-1327
Admiral Ct	Bartlesville	2 Res. Lots	\$15,000ea.	Janette Roark	918-907-1327
1505 Armstrong Ave	Bartlesville	Comm. Lot	\$6,995	Tom Blain	918-886-2276
NW Oak Park Rd	Bartlesville	Res. Lot	\$2,500	Amos Radlinger	918-766-2361
Ridgeway Dr	Bartlesville	Res. Lot	\$2,500	Amos Radlinger	918-766-2361
NW Lahoma Dr	Bartlesville	Res. Lot	\$2,500	Amos Radlinger	918-766-2361

#### COMMERCIAL PROPERTIES

1000 E 14th St	Dewey	Industrial	\$1,635,000	Tom Blain	918-886-2276
SE Washington Blvd.	Bartlesville	3 Tracts	\$995,000	Max Lutke	918-914-3813
900 S Dewey Avenue	Bartlesville	Church	<b>SOLD!</b>	Tom Blain	918-886-2276
2524 SE Washington Blvd.	Bartlesville	2 Tracts	\$795,000	Max Lutke	918-914-3813
510 S Cherokee Ave	Bartlesville	Comm.	\$498,750	Tom Blain	918-886-2276
600 W Cherry St	Cushing	Comm.	\$325,000	Tom Blain	918-886-2276
16430 HWY 123	Bartlesville	Comm.	\$300,000	Tom Blain	918-886-2276
200 NW Forest Park Road	Bartlesville	6.73 Acres	\$299,900	Tom Blain	918-886-2276
1100 E. 14th St	Dewey	Industrial	\$229,900	Chris Hester	918-333-8700
715 S. Dewey Ave	Bartlesville	Comm.	\$169,900	Kim Tate-Connor	918-335-7193
4004 Nowata Rd	Bartlesville	Mixed Use	\$125,000	Tom Blain	918-886-2276
802 W 14th St	Bartlesville	Mixed Use	<b>PENDING</b>	Tom Blain	918-886-2276

3061 S.E. Washington Blvd. • Bartlesville, OK 74006

Open: Monday-Friday 9:00-5:00 • Office: 918-333-2222

• www.ccBartlesville.com •





# Preferred Home, REALTORS



1757 Frank Phillips Blvd.  
Bartlesville, OK

**918-333-4647**

SHARON FOUTS • 918-231-2052

USING ELECTRONIC LOCKBOXES FOR YOUR SAFETY.

## FEATURED PROPERTIES



**805, 807, 809 S MADISON**

Office building for sale. Recently updated.....**\$150,000**



**328 NE MORNINGSIDE AVENUE**

3 bedrooms, 1 bath. HW floors, central H/A, fenced yard...**\$53,000**



**1612 SW JENNINGS AVENUE**

3 bedrooms, 1.5 baths. Sold "AS IS" .....**\$39,900**



**806 MISSION PL, DEWEY**

3 bedrooms, 1 bath. Sold "AS IS" .....**\$39,900**

## OFFICE SUITE

### 510 1/2 CHEROKEE

Renovated office building with five rooms, small kitchenette, lease includes parking. Stair chair lift.

### 805 & 807 S MADISON

Office space.

## RENTALS AVAILABLE

**4105 Starboard Ct** | 2 bedroom, 2 bath, 1-car attached garage ..... **Deposit/Rent: \$900**

**1612 SW Jennings Ave** | 3 bedroom, 1.5 bath, ..... **Deposit/Rent: \$650**

**308 NE Myers Ave** | 3 bedroom, 1 bath, 1-car attached garage..... **Deposit/Rent: \$650**



## COPPER CUP IMAGES

PRINT | WEB | SOCIAL | SEO

[www.coppercupimages.com](http://www.coppercupimages.com)

918-337-2781

# YOU FIND A GREAT HOUSE, and I'll help you find a great mortgage.

You may qualify for a home loan with as little as 3% down payment.

Learn more at  
[TruityCU.org/HomeLoans](http://TruityCU.org/HomeLoans).



Questions?  
Call Becki Gailey  
918.337.7625  
NMLS #993347

With Approved Credit

