

# Bartlesville

## LIVING

August 2020



## NEW BARTLESVILLE BRANCH OPENING SOON AT 422 S DEWEY

See Page 7

Look inside for articles about  
Matt Spence, The Arrow Shop,  
and House of David

**City View**

P.O. Box 603  
Bartlesville, OK 74005

\*\*\*\*\*ECRWSS\*\*\*\*

Residential Customer

PRSR STD  
U.S. Postage  
paid  
Permit #52  
Bartlesville, OK  
74003



*We've updated our office! Drop by, have a cup of coffee, and see the changes we've made!*

**Matt Spence, Agent**

**Office: 918-336-3333**

**Fax: 918-336-9829**

**124 SW Frank Phillips Blvd  
Bartlesville, OK 74003-6607**

**[matt.spence.wpdz@statefarm.com](mailto:matt.spence.wpdz@statefarm.com)**

**[mattistheagent.com](http://mattistheagent.com)**

**Providing  
Insurance  
and Financial  
Services**

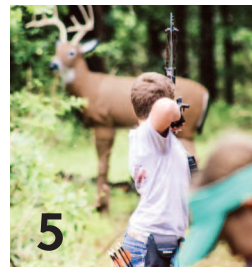
 **State Farm**

# Bartlesville

LIVING

## Table of Contents

- 3 Matt Spence: A State Farm “Good Neighbor”
- 4 Platinum Cigar a Live Music Spot
- 5 The Arrow Shop Aims to Teach
- 7 Regent Bank Invested in Community
- 9 3 Ways to Overcome Negativity and Experience God’s Goodness
- 11 Lawncare Tips From Domestic Pro Martha Stewart Herself



**Bartlesville**  
LIVING

Volume II  
Issue VIII

Bartlesville Living is Published by **ENGEL**  
PUBLISHING

Publisher  
Brian Engel  
brian@bartlesvilleliving.com

Art Direction  
Copper Cup Images  
design@coppercupimages.com

Project Manager  
Andrea Whitchurch  
awhitchurch84@gmail.com

Sales Associate  
Peg S. Wilson  
peg@bartlesvilleliving.com

Contributing Writers  
Deanna Evans  
Curt Landry

Contributing Photographers  
Peg Wilson

About the cover:  
New Regent Bank  
branch coming soon.  
Design by  
Copper Cup Images.

# STAYCATION CELEBRATIONS



LET'S GO, LET'S GO!



4707 E 21ST ST, TULSA, OK 74114

**SAFARIJOESH2O.COM**

# Matt Spence: A State Farm ‘Good Neighbor’

## Bartlesville Native Celebrates 3 Years Owning State Farm Insurance Agency

by Deanna Evans

Matt Spence is a hometown boy, through and through, so it comes as little surprise to know he is a good neighbor — a State Farm “good neighbor,” that is. He opened his own State Farm Insurance Agency in downtown Bartlesville on Aug. 1, 2017.

“This is my hometown, and I have a lot of friends and family here,” said Matt. “I love Bartlesville, and when an opening with a State Farm office came available here, I told them this would be my desired spot.”

Matt’s agency began after Kathi Swanson retired.

“The timing of Kathi Swanson’s retirement was an unexpected coincidence that couldn’t have happened at a better time,” said Matt.

Matt Spence State Farm sells insurance for auto, home, farm, ranch and business, but they also sell life and disability insurance.

“I want to help people plan for the unexpected,” he said, “and that’s not just about what coverage you have on property, but that’s also about protecting your income and your family’s financial well-being. Life and disability insurance are so important.”

Matt has four licensed team members who work under him.

“They are all fully licensed in property and casualty, and life and health insurance,” he said.

Terah Henderson, who has been with Matt since he started the office, does claims and service work. Emily Matlock, Ashley Kelley and Angie Cales focus primarily on insurance sales, “on life and health” and in “getting customers in the door.”

Matt is passionate about serving his customers, and that passion extends to serving his community, as well. He is a board member of the Bartlesville Area Chamber of Commerce and a member of the Bartlesville Rotary Club. He has previously headed the membership committee of Bartlesville Young Professionals and served as Leadership Bartlesville’s Class President in 2019. In addition, his business helps support Paths to Independence, Ray of Hope Advocacy Center, Boys & Girls Club of Bartlesville, and many other non-profits.

“I love being able to help support non-profits in town,” he said. “It’s important to me to serve my community.”

Matt graduated from Oklahoma State University in 2013 with a degree in finance and worked for a State Farm agent in Vinita from 2013-2017.

“That’s where I learned the ins and outs of the business,” he said. “I truly enjoy the face-to-face interactions with people, because it gives me the opportunity to get to know people on a deeper level and help protect them from the unexpected.”

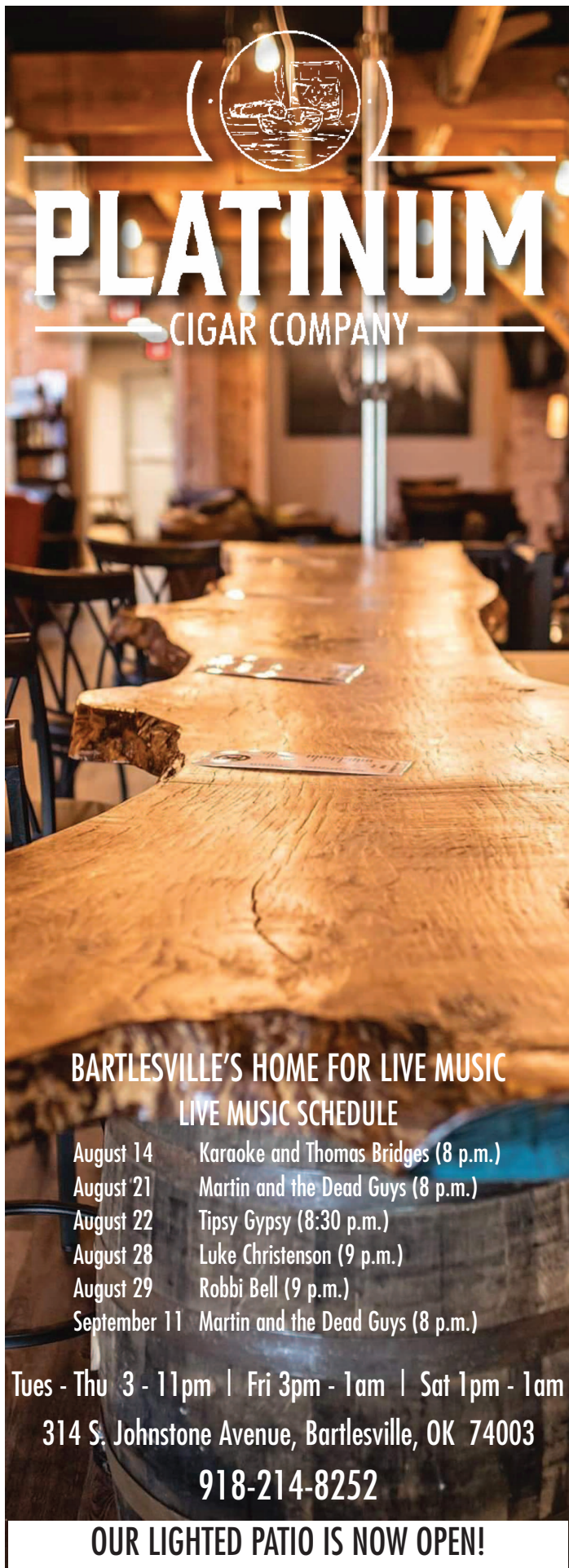
Matt is also passionate to help people develop budgets and reach their savings goals. There are several helpful links available on his website at [www.mattistheagent.com](http://www.mattistheagent.com).

A Bartlesville native, Matt graduated from Bartlesville High School in 2009. He married Erin in 2017, the same year he started his business in Bartlesville. Erin owns Garnish and Graze, a local business that creates and sells beautiful and artistic charcuterie boards. She is also a



dentist hygienist and a mother to 11-year-old Keira, who is starting sixth grade at Madison Middle School this fall. Matt and Erin are expecting a baby boy in September.

Matt Spence State Farm Insurance is located at 124 SW Frank Phillips Blvd. in downtown Bartlesville. For more information, visit his website or call 918-336-3333.



# PLATINUM

CIGAR COMPANY

## BARTLESVILLE'S HOME FOR LIVE MUSIC

### LIVE MUSIC SCHEDULE

August 14	Karaoke and Thomas Bridges (8 p.m.)
August 21	Martin and the Dead Guys (8 p.m.)
August 22	Tipsy Gypsy (8:30 p.m.)
August 28	Luke Christenson (9 p.m.)
August 29	Robbi Bell (9 p.m.)
September 11	Martin and the Dead Guys (8 p.m.)

Tues - Thu 3 - 11pm | Fri 3pm - 1am | Sat 1pm - 1am

314 S. Johnstone Avenue, Bartlesville, OK 74003

918-214-8252

**OUR LIGHTED PATIO IS NOW OPEN!**

# Platinum Cigar a Live Music Hotspot Lounge Features Local Musicians Every Weekend

by Deanna Evans

Platinum Cigar Company is a place where people go to get their senses tantalized with the flavors of cigars, wines, and spirits, all while listening to the sounds of local musicians. The popular lounge, located at 314 S. Johnstone Avenue in downtown Bartlesville, is fast becoming a popular venue to enjoy live music on the weekends.

The upcoming August lineup includes Karaoke with Thomas Bridges on Aug. 15 and Martin & The Dead Guys on Aug. 21. The live music begins at 7:30 p.m. both of those nights. According to their Facebook page, "Martin & The Dead Guys is a unique band promoting their own original music and remakes of iconic tunes by great performers from the past." Martin's music covers artists like Jimmy Hendrix, The Rolling Stones, Wilson Pickett, Bob Marley, Johnny Cash, Freddy Mercury, and many more.

Next up to perform is TypsyGypsy on Aug. 22 at 8 p.m.. From central Arkansas, this duo brings unique vocal and guitar interpretations of pop, rock and blues covers. The band's Facebook page says, "Marilyn Spencer's voice is a blend of Stevie Nicks and Elle King. Jimmy Stengel channels Tom Petty and Jason Mraz." Previous performers at Platinum include Biscuits & Gravy, Jimmie Johnson & Dustin Pittsley, Garrett Brown, Robbi Bell, Luke Christenson, and more.

In addition to the live music hosted at Platinum, the lounge also features special tasting events. For a schedule of all upcoming events, visit Platinum Cigar Company on Facebook.

Since the business opened a year ago, owners Dr. Thomas Britt and Andy Allen are enjoying providing an exceptional selection of both cigars and beverages to their customers. Platinum provides a unique lounge atmosphere to the ever-growing downtown Bartlesville.

"We appreciate the community's response and are planning on having these opportunities periodically so people can experience different flavors that they are not accustomed to," said Allen. "Future tastings will feature different wines, gins, and bourbons, and we plan to have a tasting every four to six weeks."

Platinum's tasting events cost \$30 per person to attend and the events are limited to 75 people. To reserve a spot, please call 918-214-8252, stop by in person or find them on Facebook and send them a message. There is a sign-up sheet at Platinum.

Platinum Cigar Company is located across from the ConocoPhillips building in downtown Bartlesville and is open from 3-11 p.m. Tuesdays, Wednesdays, and Thursdays and from 3 p.m. to 1 a.m. Fridays and from 1 p.m. to 1 a.m. on Saturdays.



# The Arrow Shop Aims to Teach Targeting All Your Archery Needs

by Deanna Evans



The Arrow Shop in Dewey is aiming to teach the love of archery. Owners Kelli and Miles Blair, of rural Ramona, purchased the business in 2012 and have been giving lessons since they moved into their Dewey location in 2017.

"It's a sport you can do for personal achievement, recreation and competition," said Kelli, "but it's also a sport that you can put food on the table.

"It's a sport that goes back to the Bible times and beyond. It's an ancient sport that has come a long way with technology," she added.

Kelli recently took some of her students to state competitions, and she said they all performed well.

"Our students work hard, coming into the shop to practice and practicing at home," said Kelli. "They compete against others in their age group and based on similar equipment styles. It was great to see their hard work pay off."



Certain competitions even provide scholarship funds for those wanting to continue competing at the collegiate level.

Miles and Kelli offer classes and private lessons in individual as well as group settings. Adults and children ages 8 and up can learn based on their skill and level of interest.

"We customize the lessons based on our student's individual goals," said Kelli. "We help them determine which equipment they will need and what level of coaching they desire."

The Arrow Shop opened in Bartlesville in 1968. In addition to a full retail experience and quality service, the new location offers a target range, where people can practice and hone their skills.

"We are dedicated to helping people practice and expand their archery skills," according to the business' website, [www.arrowshopok.com](http://www.arrowshopok.com). "From beginners to advanced, we have a variety of lessons taught by experts in the field of archery."

One-on-one coaching is offered for beginner, intermediate, or the advanced archer and are provided by USA Archery Level 2 Instructors.

If you are interested in getting started in archery, please call 918-333-8025. For more information, please call or visit their website, [www.arrowshopok.com](http://www.arrowshopok.com) or find them on Facebook at TheArrowShop.

# WE CREATE SMALL BUSINESS SUCCESS STORIES.

Regent Bank is working to help small businesses expand and create jobs.

As a preferred SBA Lender, we can help expedite the process.

**(918) 273-1227**

**BARTLESVILLE'S  
BUSINESS  
BANK**



**Our Promise to You.** We care about our clients. Providing exceptional customer service is how we do business and is the driving motivation for each member of the Regent Bank Team.

## **Need Assistance?**

Contact our dedicated online customer service representatives at **(918) 273-1227** or email us at **[clientservice@regent.bank](mailto:clientservice@regent.bank)**



# Regent Bank Invested in Community

## Team Members Excited to Serve Bartlesville

by Deanna Evans

Even in good times, starting a business takes faith.

Faith in yourself, your employees, and your ability to succeed. Faith in your customers. Faith above.

When Regent bank swings its doors open on a new branch in downtown Bartlesville, that faith will be placed in Bartlesville and the belief that, in spite of all the troubles that 2020 has borne, there are successful days in the town's future.

"We believe the greatest opportunity lies during the most challenging times," said Sean Kouplen, Regent Bank Chairman and CEO. "Regent Bank was a \$72 million asset community bank when we purchased it in 2008, and we experienced tremendous growth in 2009 and 2010. Now we are almost \$900 million in total assets.

In Kouplen's eyes, that growth depends on supportive relationships, especially in hard times.

"During good times, everyone treats their clients well, and the business or individual has little reason to switch banks. When times are difficult, however, many financial institutions tend to become internally focused, and their customer service suffers. They do not support their clients when they need it most."

Regent specializes in combining state-of-the-art, online mobile banking tools with a personalized approach, so customers get to know their banker by name. Those relationships have proven crucial during the economic uncertainties this year.

"This is where Regent Bank excels, because our executives are also small business owners and we understand the issues they are facing. We have always supported our clients through thick and thin," Kouplen said.

The new Bartlesville branch at 422 S. Dewey Ave. will be in the hands of local community fixtures Trevor Dorsey, Bartlesville market president, and Hank Hamilton, vice president/lending.

Dorsey has a long history of engagement in the Bartlesville community, including serving as a member of the Bartlesville City Council, the Chamber of Commerce, and numerous non-profit organizations. He and his wife, Beth, have lived in Bartlesville for six years, raising their three sons, Tayton, Mason and Bryson, along with owning a small cattle operation. Trevor went to work for Regent Bank in 2017 and has spent 24 years in banking, the past 13 years in a management role.

"I am very excited to see Regent Bank expand into Bartlesville, as we are all very involved in giving back to the community through various non-profits, youth programs, and the First Baptist Church," said Dorsey.

Hamilton is also a longtime local resident, having moved to the Bartlesville area in 1985. He has more than 44 years of experience in the banking industry and was formerly with Plaza Bank (now



L TO R, FRONT: JEANNIE STRACHAN, BOBBIE BROWN, BROOKE WILLIAMS.  
BACK: BUCK TRAYSON STEWART, TREVOR DORSEY, HANK HAMILTON

BOK). His primary focus at Regent Bank is business development and mortgage lending.

Hamilton and his wife, Virginia, reside in the Dewey area. He is involved in and supports many non-profit organizations. He and his family are members of the First Baptist Church in Dewey.

Kouplen said Regent fits well in Bartlesville because the community values personalized service and community support.

"We chose to open a bank in Bartlesville because of the many strong relationships that Trevor and Hank have in the community, and to service our existing Bartlesville clients. Since we have only been located 15 minutes away (in Nowata), our team has been extremely involved in the Bartlesville community, and many residents have requested that we open a facility so they could do business with us."

In addition to the business sector, Regent also specializes in non-profit business banking. For non-profits, Regent offers excellent rates and no fees. The bank recently gave away \$50,000 to area non-profits, as part of an effort to offset lost revenue during the COVID-19 emergency.

"Giving back to our non-profit community will always be significant in order to serve those in need. But in 2020 with COVID, it has been more significant than ever, as most non-profits had to go to virtual events rather than the normal fundraising efforts that they have traditionally done," Dorsey said.

In addition to Dorsey and Hamilton, Bartlesville Regent Bank's team members include Jeannie Strachan as Executive Loan Assistant, Trayson Stewart at Branch Manager, Bobbie Brown as Client Service Specialist and Brooke Williams as Lead Teller.

The new Bartlesville branch plans to open its doors in September, and Dorsey is excited.

"I couldn't be more pleased to be able to work and serve my friends and neighbors in Bartlesville," Dorsey said.

# JOIN US

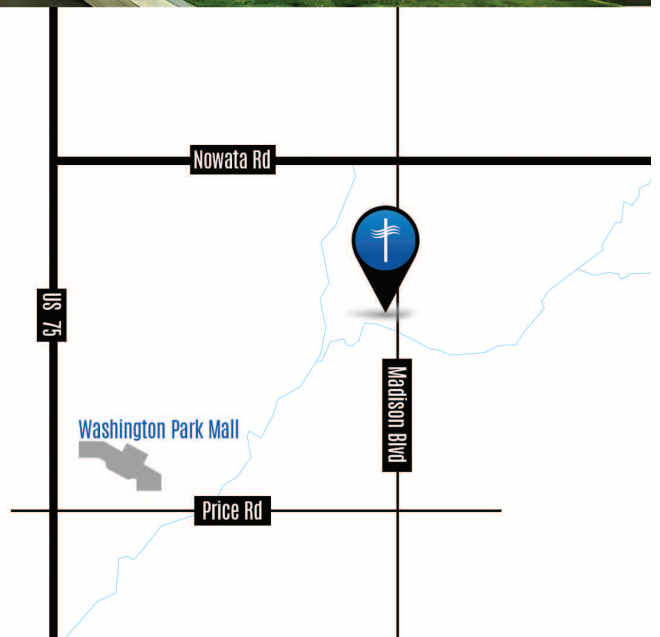
*this Sunday*

**9:30am or 11am**



**Spirit**CHURCH  
love. joy. peace.

2121 S. Madison Ave.



# 3 Ways to Overcome Negativity and Experience God's Goodness

by Curt Landry



Do you wake up with negative thoughts about how the day will go? You grudgingly get out of bed, pour yourself a cup of coffee, and get ready for the day.

These negative thoughts can set the stage for the day ahead. They cause:

- Problems in relationships
- Difficulties at work
- Thoughts of anxiety and depression
- A mindset of lack
- Doubt and unbelief

**In short, a negative mindset produces negative results in our lives.**

Genesis 1:11 says, "Then God said, 'Let the earth bring forth... the fruit tree that yields fruit according to its kind, whose seed is in itself, on the hearth'; and it was so." Friends, you and I have been grafted into the branch of the olive tree (Romans 11:17) and share in the nourishing root. But if we have a negative mindset, the seed of resentment, bitterness, and annoyance will reproduce in our lives.

**The negative seed drowns out the voice of the Lord, for whom we belong to in Christ.**

God has set up His Kingdom so that we will produce after the seed that is within us. So then, we must cancel the seed of Adam from the Garden and live by and produce after the seed of Abraham — which is Christ within us. "And if you are Christ's, then you are Abraham's seed, and heirs according to the promise." — Galatians 3:29. How do we produce after the righteous seed within us, freeing us from a negative mindset?

**We experience more of God's goodness. Here's how:**

3 Ways to Experience More of God's Goodness.

• Pray and proclaim what you believe, not what you feel. Many people talk about what they feel. They feel tired, exhausted, fearful, anxious, or annoyed. But I encourage you to pray and proclaim what you believe rather than feel. Do you believe God is good? Do you believe He has good plans for you (Jeremiah 29:11)? According to His Word, these things are true. So, proclaim them!

*"Finally, brethren, whatever things are true, whatever things are noble, whatever things are just, whatever things are pure, whatever things are lovely, whatever things are of good report, if there is any virtue and if there is anything praiseworthy — meditate on these things." — Philippians 4:8.*

• Take thoughts captive and renew your mind. Negative mindsets can start small and grow or come on all at once. Understand that shifting your mindset is a process. The more you take your thoughts captive and make them obedient to Christ and renew your mind, the easier it will be.

*"... bringing every thought into captivity to the obedience of Christ ..." — 2 Corinthians 10:5. "... be transformed by the renewing of your mind ..." — Romans 12:2.*

• Expect deliverance from negative mindsets. It is not God's will for you to be oppressed by negativity. Yes, He asks that you follow His divine instruction (discussed in points 1 and 2), but His Word also promises He will finish what He starts.

Freedom is God's will. He wants you to experience it!

*"... He who has begun a good work in you will complete it until the day of Jesus Christ ..." — Philippians 1:6*

Don't let negative mindsets rule your life. Let Christ rule in your heart.

House of David  
22500 South Hwy. 125  
Fairland, Oklahoma 74343



# Preferred Home, REALTORS



1757 Frank Phillips Blvd.  
Bartlesville, OK

**918-333-4647**

SHARON FOUTS • 918-231-2052

## FEATURED PROPERTIES



**805, 807, 809 S MADISON AVENUE**

Office building for sale. Recently updated ..... **\$150,000**



**207 S CHESTNUT STREET, COPAN**

3 bedrooms, 1 bath, Brick & Frame house, CHA, Lg fenced back yard..... **\$77,000**



**429 S CHOCTAW AVENUE**

2 bedrooms, 1 bath, living room, kitchen, 1-car detached garage, CHA ..... **\$54,950**

## OFFICE SUITE

### 510 1/2 CHEROKEE

Renovated office building with five rooms, small kitchenette, lease includes parking. Stair chair lift.

### 805 & 807 S MADISON

Office space.

## RENTALS AVAILABLE

**1234 Macklyn Ln** | 3 bed, 2 bath, 2 car-attached garage ..... **Deposit/Rent: \$900**

**1607 Hickory Ave** | 2 bed, 1 ba, 1 car-attached garage, refinished hrdwd flrs..... **Deposit/Rent: \$600**

**726 S Chickasaw** | 1 bed, 1 bath ..... **Deposit/Rent: \$500**

**520 E Silas St** | 1 bed, 1 bath ..... **Deposit/Rent: \$500**

**USING ELECTRONIC LOCKBOXES FOR YOUR SAFETY**



## COPPER CUP IMAGES

PRINT | WEB | SOCIAL | SEO

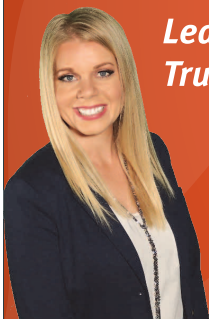
[www.coppercupimages.com](http://www.coppercupimages.com)

918-337-2781

## YOU FIND A GREAT HOUSE, and I'll help you find a great mortgage.

You may qualify for a home loan with as little as 3% down payment.

Learn more at  
[TruityCU.org/HomeLoans](http://TruityCU.org/HomeLoans).



Questions?  
Call Becki Gailey  
918.337.7625  
NMLS #993347

With Approved Credit



# Lawn care Tips From Domestic Pro Martha Stewart Herself

When you think of Martha Stewart, visions of picture-perfect cookies, floral arrangements and garden parties come to mind. Behind the scenes, however, Martha prides herself in getting hands-on while maintaining her personal 150-acre farm in Bedford, New York.

"I have the privilege of living on a working farm, and while it is certainly serene and picturesque, it's also a lot of hard work," said Stewart. "I really enjoy getting my hands dirty in the garden and mowing my lawns each week — it's satisfying to hop on my mower, listen to some music, and get my work done, all while carving out some 'me time' in the process."

Martha Stewart's tips for lawn maintenance:

- **Schedule everything.** A hobby farm is a continual work-in-progress. From the chicken coop to the horse paddocks, to the gardens, lawns and orchard, the changing seasons play a big role in guiding a year-round maintenance plan. Juggling a farm and a busy work schedule can be tricky. The solution: Martha calendars everything at the beginning of the year, not only her backyard parties and events, but also her lawn care routine and needs — from monthly checks on the mowers (fluids, blade checks, etc.), to scheduling weekly mowing and trimming tasks. This way you don't forget important maintenance tasks and your lawn will flourish and be party-ready year-round.

- **Invest in quality.** From the start, invest in a quality mower, whether it be a ride-on, walk-behind or zero-turn mower. Quality equipment will have a direct impact on the time it takes to manage your lawn and will contribute to the overall health of the turf itself. "We have been using Kubota zero-turn mowers for years — the reliability and durability is second to none for homeowners looking for a sleek, comfortable ride and professional results," Martha added. "Did I mention how easy they are to operate?"

- **Don't cut corners.** One of the easiest ways to damage your lawn is by cutting it too short. You may think cutting it short will save you time in the long run, but you'd be wrong. As a rule of thumb, we cut no more than 1/3 of the grass blades at a time, because if we cut too much, it will damage the grass and cause browning and grass loss. Plus, grass that is cut properly thrives in a wider range of weather conditions.

- **Recycle and reuse.** It's important to outfit your mower with a grass catcher - not only does it give a clean finish to the job at

hand, but the clippings can be composted and used back in the lawn to keep it healthy and happy. Have chickens? Feed fresh grass clippings to them — they go crazy for it, and it seems to increase egg production.

- **Don't be afraid and have fun.** A zero-turn mower can be intimidating if you haven't operated one before. "I say, get over that fear and hop on — if I can mow my own lawn, so can any woman out there. We've got this! And, I promise it will be the one 'chore' you won't give up — it really is quite fun."

For more lawn care tips visit [KubotaUSA.com](http://KubotaUSA.com).





## The Village Apartments

Great apartment living at the right price.

- Club Room
- Game Room
- Laundry Room
- Pond with Fountain
- Exercise Equipment
- Swimming Pool
- Basketball Court
- 1 & 2 Bedrooms

Voted Best in Bartlesville for the last 3 years in a row!

We strive for excellence in service. Come by and see for yourself.



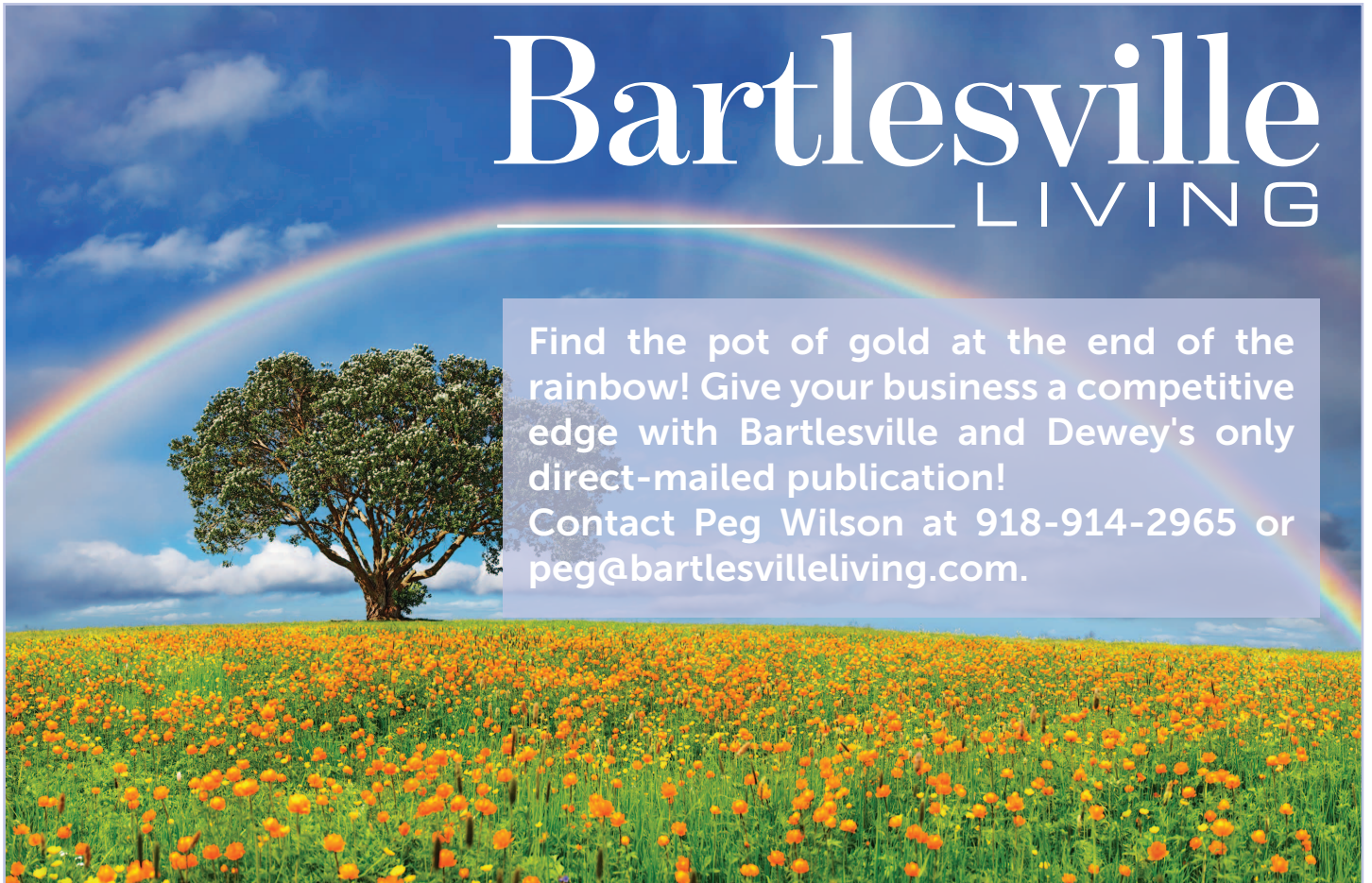
1565 King Drive, Bartlesville, OK 74006 | 918-335-2911 (O) | 918-335-2230 (F) | [www.bvillvillageapt.com](http://www.bvillvillageapt.com)

# Bartlesville

---

## LIVING

Find the pot of gold at the end of the rainbow! Give your business a competitive edge with Bartlesville and Dewey's only direct-mailed publication! Contact Peg Wilson at 918-914-2965 or [peg@bartlesvilleliving.com](mailto:peg@bartlesvilleliving.com).



# CHINOWTH & COHEN

REALTORS®

OKLAHOMA'S #1 INDEPENDENT REAL ESTATE COMPANY

## BEAUTIFUL ON 1/2 ACRE



**1421 Mission Ct \$293,000**

Beautiful home with Kitchen and Master Bath updates, Hardwood refinished floors, New Roof and much more. 4/5 Bdrms or 1/2 Living areas plus office.

## COMMERCIAL/RETAIL



**124 SE Frank Phillips Blvd \$800,000**

Commercial opportunity in high traffic area with established retail, restaurants, etc., 9,000 sq.ft. lower level, 3,000 sq. ft. upper level.

Janette Roark • 918-907-1327  
jroark@ccoklahoma.com



Tom Blain  
918-886-2276



Kathlene Blevins  
918-440-1859



Carolyn Bolding  
918-327-1133



Jonathan Bolding  
918-327-3137



Dusty Brown  
918-766-4126



Freda Brown  
918-418-9506



Charlene Bejcek  
918-440-4763



Cheryl Fregin  
918-440-0040



Cindy Folk  
918-559-9905



Andrew Gordon  
918-230-0864



Barbara Hopper  
918-335-7202



Chris Hester  
918-333-8700



Lindsey King  
918-500-9170



Kathy Lee  
918-440-2227



Max Lutke  
918-914-3813



Kristi Martin  
620-870-9124



Amos Radlinger  
918-766-2361



Janette Roark  
918-907-1327



Brian Saltzman  
918-214-3053



Kim Tate-Conner  
918-335-7193



Sydney Nichols  
918-397-4505



Keeli Hand-Droegge  
918-697-8509  
Broker/Manager

BARTLESVILLE'S  
LOCALLY OWNED  
REAL ESTATE  
COMPANY!

## FEATURED RESIDENTIAL, LAND, LOTS & COMMERCIAL PROPERTIES!

### RESIDENTIAL

2908 Roanoke Ridge Rd	Bartlesville	4/3/2/3	\$337,500	Carolyn Bolding	918-327-1133
1421 Mission Court	Bartlesville	4/2/1/3	\$293,000	Janette Roark	918-907-1327
107 Prairie Ridge Ct	Bartlesville	3/3/3	<b>SOLD!</b>	Cheryl Fregin	918-440-0040
2521 Evergreen Dr	Bartlesville		<b>SOLD!</b>	Carolyn Bolding	918-327-1133
4315 Fairview Rd	Bartlesville		<b>PENDING</b>	Brian Saltzman	918-214-3053
1718 Skyline Drive	Bartlesville	4/3.5/2	\$215,000	Kathy Lee	918-440-2227
1230 East Drive	Bartlesville		<b>SOLD!</b>	Sydney Nichols	918-397-4505
1108 Meadow Lane	Bartlesville		<b>SOLD!</b>	Amos Radlinger	918-766-2361
6437 Clear Creek Loop	Bartlesville	4/2.5/2	\$247,500	Charlene Bejcek	918-440-4763
5628 Park Hill Court	Bartlesville	4/2.5/2	<b>PENDING</b>	Kathy Lee	918-440-2227
1401 Delaware Ave	Bartlesville	4/3/2	\$209,900	Barbara Hopper	918-335-7202
1529 Hillcrest	Bartlesville	3/2.5/2	\$189,900	Carolyn Bolding	918-327-1133
2701 Evergreen Dr	Bartlesville		<b>PENDING</b>	Cheryl Fregin	918-440-0040
2355 London Lane	Bartlesville	3/2.5/2	\$175,000	Amos Radlinger	918-766-2361
1721 Cherokee Place	Bartlesville	3/1.5/1	\$179,000	Amos Radlinger	918-766-2361
2916 Greenwood Ct	Bartlesville	4/3/2	\$159,900	Tom Blain	918-886-2276
220 SE Roselawn Ave	Bartlesville		<b>SOLD!</b>	Dusty Brown	918-766-4126
4606 Cara Lee Lane	Bartlesville	3/2/2	\$129,900	Chris Hester	918-335-8700
4710 Amherst Drive	Bartlesville	3/2/2	\$124,900	Amos Radlinger	918-766-2361
526 E 16th Street	Bartlesville	4/2.5/1	\$119,500	Barbara Hopper	918-335-7202
215 E. 15th Street	Bartlesville	3/2/2	\$104,900	Keeli Hand-Droegge	918-697-8509
417 Yale Drive	Bartlesville	3/1.5/2	<b>PENDING</b>	Amos Radlinger	918-766-2361
1035 Renick Lane	Bartlesville	4/2/2	\$109,900	Charlene Bejcek	918-440-4763
1325 S. Cherokee Ave	Bartlesville	3/1/2	\$99,000	Amos Radlinger	918-766-2361
4724 Pathfinder	Bartlesville		<b>SOLD!</b>	Barbara Hopper	918-335-7202
826 Winding Way	Bartlesville	2/1.5/2	\$89,900	Chris Hester	918-335-8700
121 Ramblewood Rd	Bartlesville		<b>PENDING</b>	Barbara Hopper	918-335-7202
800 S Elm Avenue	Bartlesville		<b>SOLD!</b>	Barbara Hopper	918-335-7202
4120 E Tuxedo Blvd	Bartlesville		<b>PENDING</b>	Kathy Lee	918-440-2227
1800 Skyline Place	Bartlesville		<b>PENDING</b>	Kathy Lee	918-440-2227
110 Mulberry Lane	Bartlesville	3/2/1	\$72,250	Amos Radlinger	918-766-2361
2135 Dewey Pl	Bartlesville		<b>PENDING</b>	Barbara Hopper	918-335-7202
5217 Nowata Rd #C203	Bartlesville	2/2	\$59,500	Chris Hester	918-335-8700
318 W. 15th St	Bartlesville	2/2	\$64,500	Barbara Hopper	918-335-7202
505 Sooner Rd	Bartlesville		<b>PENDING</b>	Keeli Droegge	918-697-8509

### SURROUNDING AREAS

Rt 1, Box 89	Wann		<b>SOLD!</b>	Cindy Folk	918-559-9905
393 Leisure Land Loop	Adair	3/2/2	\$269,000	Cindy Folk	918-559-9905
8401 N 3990 Rd	Copan		<b>PENDING</b>	Sydney Nichols	918-397-4505
RT 1, Box 175, Delaware	Ok/Union		<b>SOLD!</b>	Cindy Folk	918-559-9905
28719 N 3964 Rd	Caney Valley		<b>SOLD!</b>	Amos Radlinger	918-766-2361
410 Shawnee Street	S Coffeyville	3/2/2	\$159,900	Carolyn Bolding	918-327-1133
403 S Hickory St	Copan	3/3/2	<b>PENDING</b>	Kathy Lee	918-440-2227
453753 Cate Dr	Cleora	3/1/1	<b>SOLD!</b>	Barbara Hopper	918-335-7202
1425 Sunset Road	Pawhuska	1/2/2	\$124,900	Chris Hester	918-335-8700
210 Edens Ave	Copan		<b>PENDING</b>	Keeli Hand-Droegge	918-697-8509
7748 Hickory Hill Road	Bowring	3/1.5	\$65,500	Andrew Gordon	918-230-0864
230 N Creek Ave	Dewey	2/1	\$53,500	Barbara Hopper	918-335-7202
228 Creek Ave	Dewey	2/1	\$51,500	Barbara Hopper	918-335-7202
1320 N Caney Street	Copan	2/2	\$39,900	Charlene Bejcek	918-440-4763
308 Shawnee Ave	Dewey	2/1	\$29,900	Charlene Bejcek	918-440-4763

### RESIDENTIAL LOTS & VACANT LAND

S.E. Price Rd	Bartlesville	50 Acres	\$1,575,000	Janette Roark	918-907-1327
W 700 Rd	Ok/Union	278 Acres	\$1,084,200	Cindy Folk	918-559-9905
3813 E. Frank Phillips Blvd.	Bartlesville	Comm. Lot	\$725,000	Max Lutke	918-914-3813
6532 W 1781 Dr	Bartlesville	150.17 Acres	\$675,765	Tom Blain	918-886-2276
HWY 75 North	Dewey	Comm. 8+ Ac	\$499,900	Tom Blain	918-886-2276
HWY 75	Caney Valley	100 Acres	\$499,000	Tom Blain	918-886-2276
SE Barnett Ave	Land		\$498,000	Tom Blain	918-886-2276
SE Adams Road	Bartlesville	Comm Lot	\$400,000	Max Lutke	918-914-3813
19501 4030 Rd	Bartlesville	70 m/l	\$374,765	Cindy Folk	918-559-9905
Tuxedo Blvd	Bartlesville	8.32 Acres	\$200,000	Max Lutke	918-914-3813
Southport Dr	Bartlesville	8 Acres	\$120,000	Janette Roark	918-907-1327
Deerfield Addition II	Bartlesville	17 Lots	\$40-\$69,000 ea.	Janette Roark	918-907-1327
103 S Osage Ave	Bartlesville	Comm lot	\$63,900	Tom Blain	918-886-2276
Deerfield Addition III	Bartlesville	9 Lots	\$60,000 ea.	Janette Roark	918-907-1327
Southport Dr	Bartlesville	3.42 Acres	\$59,500	Janette Roark	918-907-1327
NE Tuxedo Dr	Bartlesville	7.52 ac	\$55,000	Carolyn Bolding	918-327-1133
Wyandotte Ave	Bartlesville	3 Res. Lots	\$30,000 ea.	Janette Roark	918-907-1327
Southport Dr	Bartlesville	Res. Lot	\$29,500	Janette Roark	918-907-1327
Southport Loop	Bartlesville	Res. Lot	\$21,000	Janette Roark	918-907-1327
Southport Loop	Bartlesville	Res. Lot	\$17,500	Janette Roark	918-907-1327
Admiral Ct	Bartlesville	2 Res. Lots	\$15,000 ea.	Janette Roark	918-907-1327
1505 Armstrong Ave	Bartlesville	Comm. Lot	\$6,900	Tom Blain	918-886-2276

### COMMERCIAL PROPERTIES

11000 E 14th St	Dewey	Industrial	\$995,000	Tom Blain	918-886-2276
124 SE Frank Phillips Blvd	Bartlesville	Retail	\$800,000	Janette Roark	918-907-1327
SE Washington Blvd.	Bartlesville	3 Tracts	\$895,000	Max Lutke	918-914-3813
700 E Durham Road	Dewey	Church	\$249,900	Tom Blain	918-886-2276
2524 SE Washington Blvd.	Bartlesville	2 Tracts	\$725,000	Max Lutke	918-914-3813
510 S Cherokee Ave	Bartlesville	Comm.	\$498,750	Tom Blain	918-886-2276
600 W Cherry St	Cushing	Comm.	\$325,000	Tom Blain	918-886-2276
16430 HWY 123	Bartlesville	Comm.	\$300,000	Tom Blain	918-886-2276
200 NW Forest Park Road	Bartlesville	6.73 Acres	\$299,900	Tom Blain	918-886-2276
1651 Lombard Lane	Skiatook	Hanger	\$299,500	Barbara Hopper	918-335-7202
209 S Choctaw Ave	Bartlesville	mixed use	\$240,000	Brian Saltzman	918-214-3053
4004 Nowata Rd	Bartlesville	Mixed Use	\$105,900	Tom Blain	918-886-2276
904 Willow St S	Coffeyville	Restaurant	\$99,000	Cindy Folk	918-559-9905
420 N. Osage Ave	Dewey	HWY Front	\$95,000	Tom Blain	918-886-2276
123 NE Washington Blvd	Bartlesville	Retail	\$90,000	Brian Saltzman	918-214-3053

3061 S.E. Washington Blvd • Bartlesville, OK 74006

www.ccBartlesville.com • 918-333-2222

